

**locata<sup>®</sup>**

**detectable tape**

**locata<sup>®</sup>**

**detectable mesh**



**Detectable tape and mesh to locate buried utilities**

 **Centriforce**  
Preventing damage with sustainable plastics

Centriforce Products Limited  
14-16 Derby Road, Liverpool, L20 8EE

+44 (0)151 207 8109  
sales@centriforce.co.uk  
[www.centriforce.com](http://www.centriforce.com)



Locata<sup>®</sup> detectable tape and mesh offer a brightly coloured early visible warning of a buried service. They have the added benefit of a stainless steel tracer wire which means they can be detected from the surface using cable avoidance tools prior to excavation.

The steel tracer wires at the end of each roll are joined together using crimps. This ensures a signal is received along the entire length of the trench.

The products are usually installed a specified distance above the service line. They can also be used in combination with Stokbord<sup>®</sup> Cover or Tapetile<sup>®</sup> utility protection which also offer a physical barrier above buried utilities.

- Detect location of buried utilities prior to excavation
- Provide clear visual warning with bright colours and bold warning text
- Resistant to most soil types, including alkaline and acid soils
- Available in a range of widths
- Custom options, including text, colour and language available
- Products available to comply with:
  - ENA TS 12-23
  - EN 12613:2009
- Specified and approved by DNOs

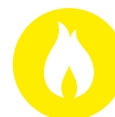
Locata<sup>®</sup> detectable tape and mesh are recommended for use to mark the following underground utilities:



ELECTRICITY



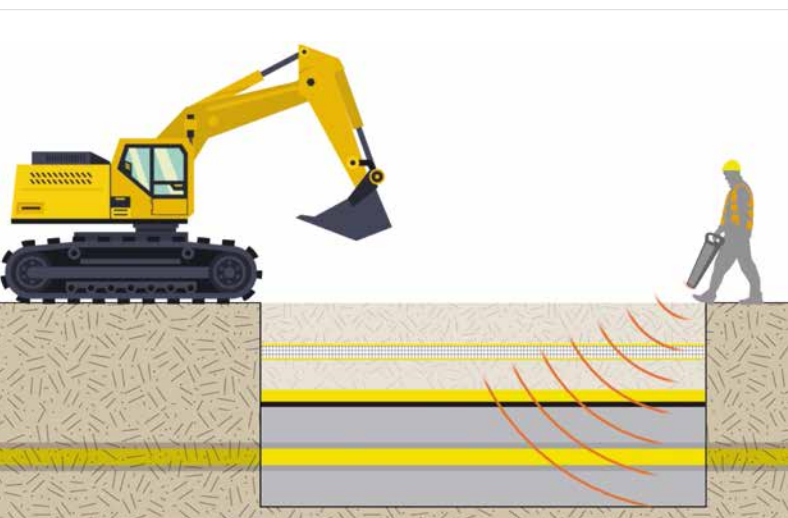
WATER



GAS



TELECOMS



For more information, refer to the relevant Specification Data Sheet for these products.



Designed and manufactured by



centriforce.com